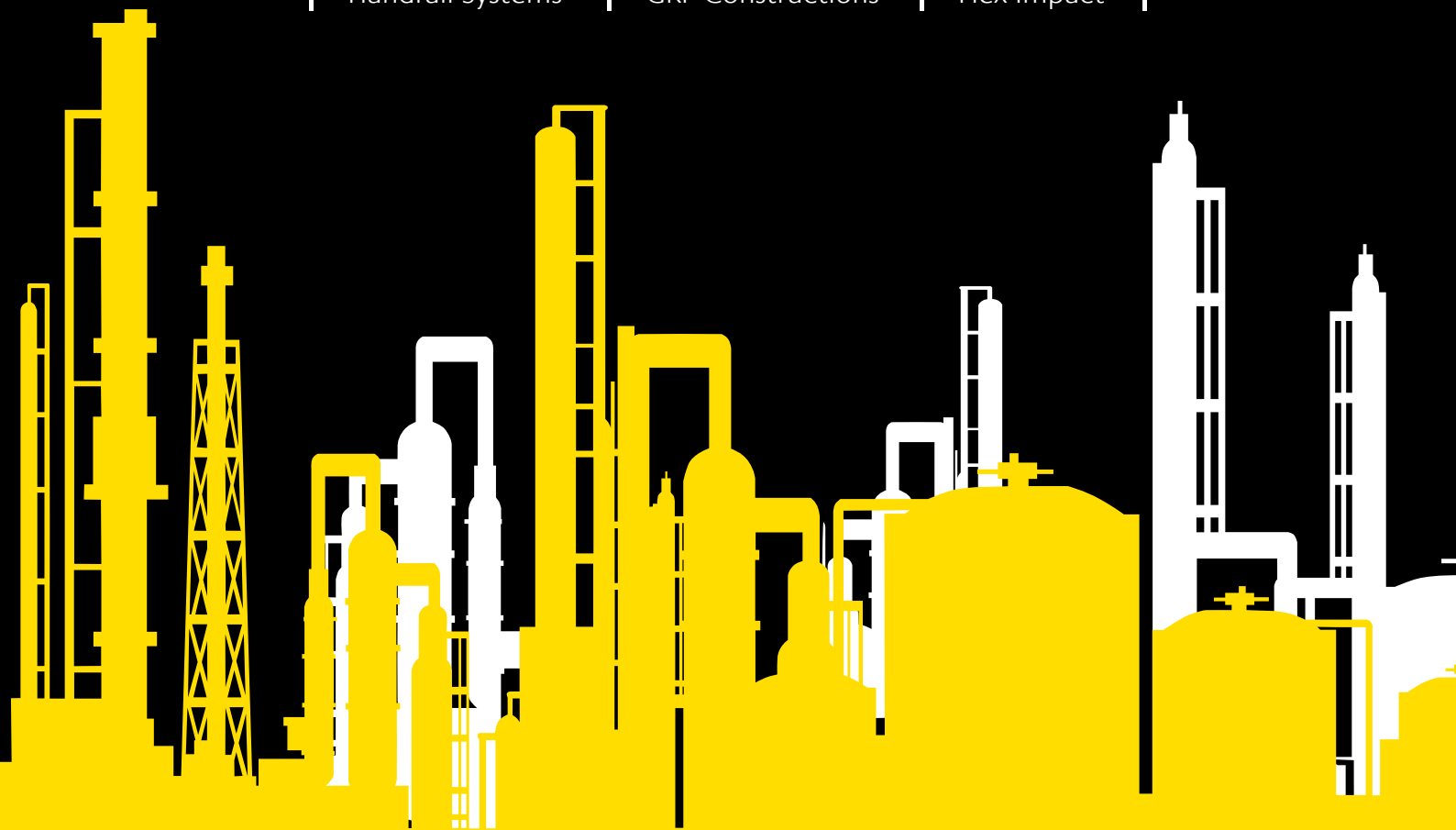


- | Anti-slip
- | GRP Grating
- | Safety Gates
- | Handrail Systems
- | GRP Constructions
- | Flex Impact



Anti-slip	2
GRP Grating	5
Safety Gates	7
Handrail Systems	9
GRP Constructions	10
Flex Impact	11
Application	14
Service	22

## Evergrip spółka z o.o.

ul. Matuszewska 14,  
03-876 Warszawa  
NIP: 1132737442  
tel: +48 22 424 78 59  
Skype: evergrip.pl  
e-mail: [biuro@evergrip.pl](mailto:biuro@evergrip.pl)

## Sales departament:

tel: +48 22 465 26 01  
tel: +48 531 040 330  
tel: +48 792 334 456

[www.evergrip.pl](http://www.evergrip.pl)

Evergrip is a privately owned company formed in 2008 as a manufacturer and supplier of anti-slip flooring surfaces for industrial & public access areas. Since then, the business has expanded to include the manufacture, import/export and Winstallation of a broad range of safe access products made predominantly from composite materials:

- Anti-slip flooring surfaces
- Moulded and pultruded gratings
- Safety handrails
- Pultruded sections and access structures
- Tactile paving surfaces
- Safety gates
- Railway platform solutions
- Flexible impact barriers

We are able to provide our clients with a turnkey service:

- Site surveys with no obligation
- Technical advice
- Design
- Drawings & specification
- Product development
- Engineering verification
- Fabrication and installation

Evergrip are established within the Europe as a leading supplier to well known distribution and inventory management organisations. Selling the success of high quality products through both direct business and strategic partners into varied market sectors, including manufacturing/industrial plants, local government and infrastructure projects has resulted in steady and consistent growth.

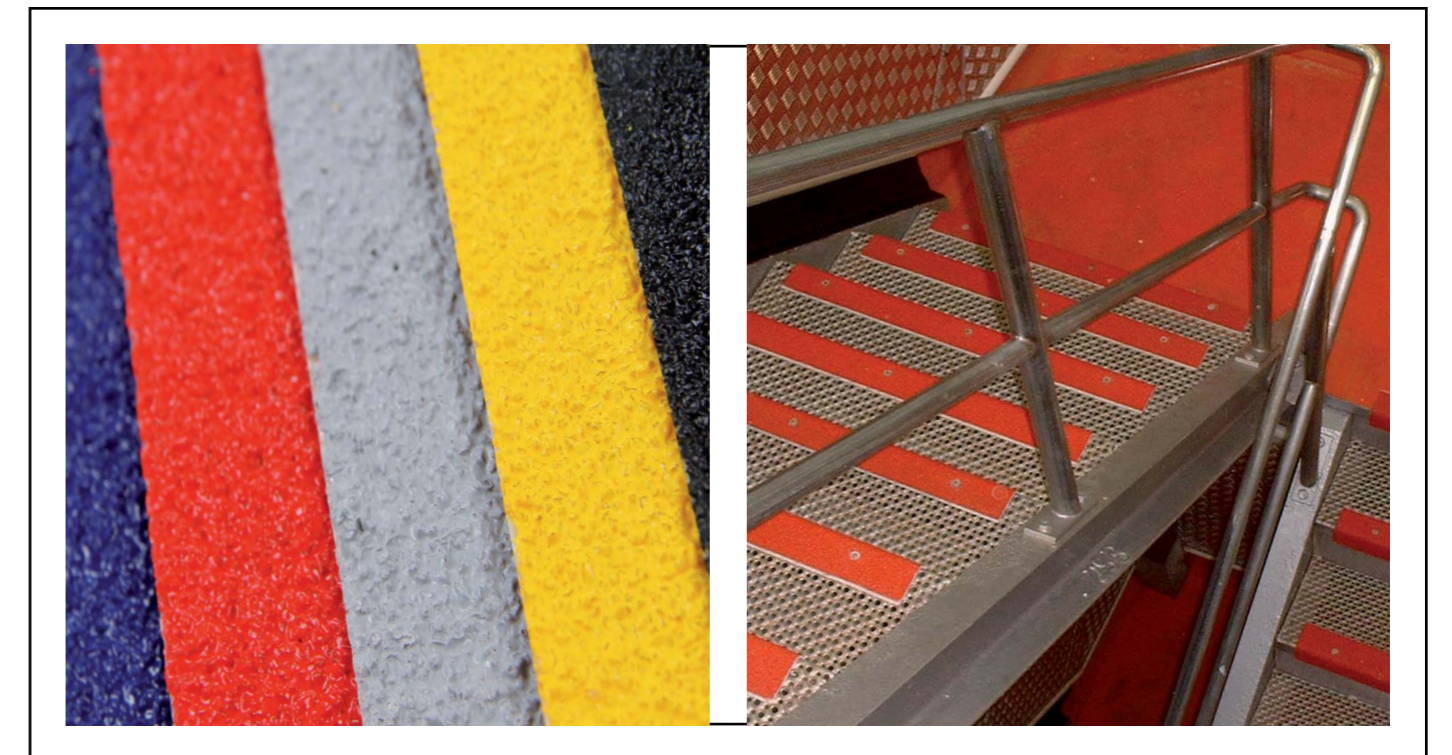


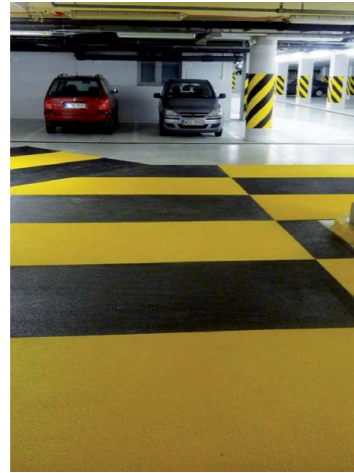
## Highly durable anti-slip GRP sheets & profiles

Evergrip manufacture, import and install a comprehensive range of Anti-slip flooring surfaces suitable for all industrial and commercial environments. The range offers high visibility options and is impervious to most environmental conditions making it suitable for both internal and external use, in and around the workplace. The products have been developed to comply with relevant safety standards and regulations with some designed to help meet the requirements of Equality Act legislation. All will reduce or completely remove hazardous slippery conditions; improve the safety of personnel, the general public and reduce the likelihood of unnecessary accidents. All types are made from a composite of Glass Reinforced Polymer (GRP) substrates & polyester resins. Incorporated into the surface structure are granules of refined aluminium oxide which provide the unique characteristic durability & high levels of slip resistance.

### Typical installation scenarios include:

- Factory production line walkways
- Pedestrian bridge or underpass steps and walkways
- Worker access to machinery
- Marina gangways
- Covering steel chequer plate or grid steps
- Covering wooden or concrete steps
- Board walks
- Tiled surfaces
- Ladder rungs





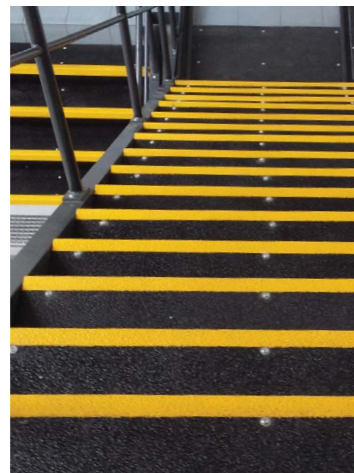
### Flat Sheet 2mm and 4mm

The preferred choice over tapes and paints, offering an almost permanent solution to slip hazards. The product can be laid and fixed using a combination of adhesive/sealant and fasteners to effectively fix, bond and seal the edges, preventing any ingress of moisture.



### Ladder Rung Cover

Reduces the risk of slipping on metal, wooden and fibreglass ladder rungs. They are a hard wearing and a highly effective solution especially in wet conditions. The product range features a choice of two profile shapes with a range of common sizes to suit most industrial ladders.



### Stair Tread & Landing Cover

Designed specifically to reduce the risk of slipping on steps, stairways and landings. The versatility of the covers mean they can be used even where there is minor damage or deterioration to an existing surface.



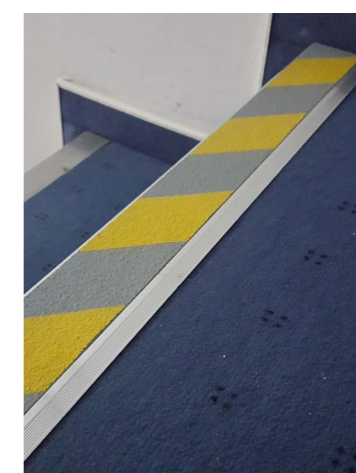
### Anti Slip Strips

A combination of premium quality aluminium oxide & resin components make up a highly effective anti-slip product, that will withstand the rigours of all industrial and commercial environments.



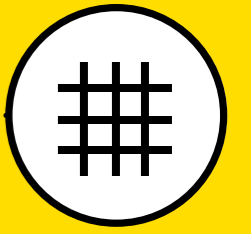
### Stair Nosing

Specifically designed to reduce the risk of slipping on step edges. Stair Nosings are a highly effective and durable Anti-slip surface that will withstand the rigours of all industrial and commercial environments.



### Aluminium Stair Nosing

Specifically designed to reduce the risk of slipping on step edges. Aluminium Stair Nosings are a highly effective and durable Anti-slip surface that will withstand the rigours of all industrial and commercial environments. An aluminium casing holds a strip of anti-slip to provide grip, whilst giving a premium look for internal staircases.



## High strength, durable and lightweight industrial gratings; providing maintenance free reliability in all environments.

Glass reinforced polymer (GRP) gratings offer an attractive combination of mechanical & physical properties and are a proven, ideal replacement for steel & aluminium gratings. They are available in a wide variety of structural, chemical and dimensional variants making them suitable for installations in all industrial & commercial environments.

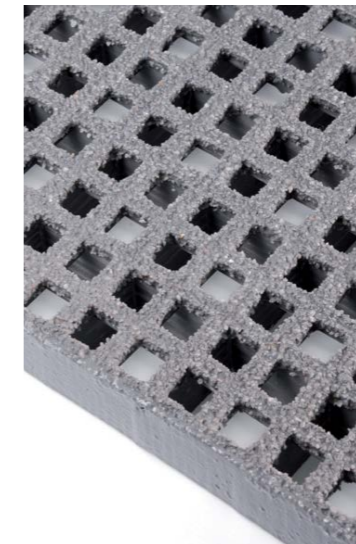
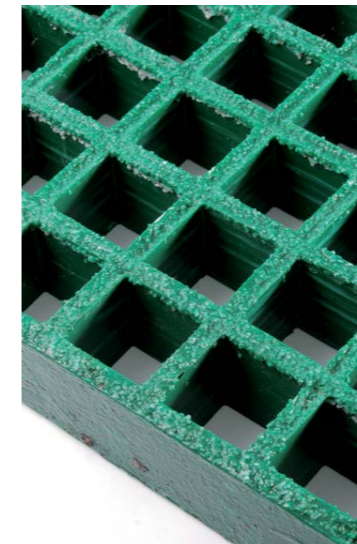
### All types exhibit key product features & benefits:

- Strong & durable - excellent loading ability
- Non corroding - no issues with rust, maintenance free, low life-cycle costs
- Impact resistant - will not crack or chip, maintains appearance
- Fire retardant - choice of resin type to meet required performance
- Chemical resistant - choice of options to suit all environments
- Low electrical & thermal conductivity - ideal near electrical installations
- Anti-slip surfaces - reduction in slip related accidents
- Relative light weight - reduced transport costs and load on existing structures
- Easy handling, fabrication & assembly - no welding

GRP Gratings are produced by two distinct manufacturing processes to offer either Moulded or Pultruded variants. Both types are composite products and combine fibreglass strands with thermosetting resins to form extremely strong panel structures. These two complimentary materials give GRP gratings excellent compressive and tensile strength.

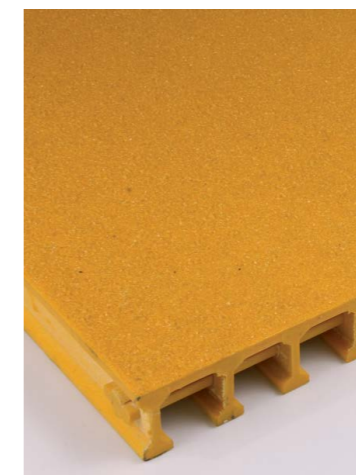
### Typical installation scenarios include:

- Access platform walkways
- Pedestrian bridges, steps and walkways
- Worker access to machinery
- Marina gangways
- Replacements for steel chequer plate or grid steps
- Replacements for wooden steps
- Marine vessel applications
- Water treatment works
- Offshore wind & oil facilities



### Moduled Grating

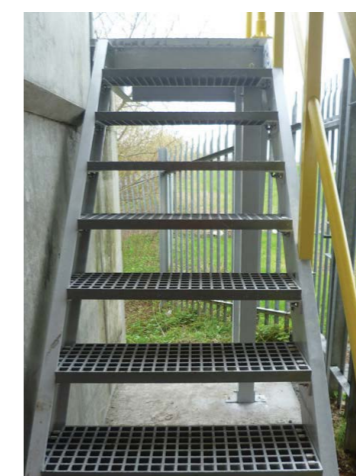
Manufactured by a process of moulding, a combination of fibreglass rovings with thermosetting resin forms an extremely strong, one piece, open mesh panel. Suitable for both interior or exterior use, a choice of resin type offers proven resistance to the effects of chemical corrosion and UV light degradation along with fire retardant properties. Gritted grating has a concave surface on each of the panel mesh bars providing a degree of slip resistance. However, the addition of a bonded grit coating of refined aluminium oxide greatly enhances the anti-slip properties & durability of the product. Covered and gritted top surfaces are also available.



### Pultruded Grating

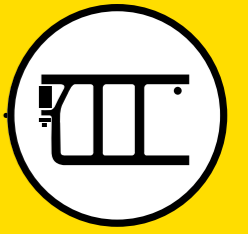
Manufactured by a process of pultrusion, longitudinal fibreglass rovings, multi-directional glass mat reinforcement, thermosetting resins and a synthetic surface veil are all combined to form an extremely strong and corrosion resistant structural section.

These sections, or bearing bars are either 'I' or 'T' shaped profiles and are assembled and transversely linked with 3-part composite rod sections. They are suitable for both interior or exterior use, coupled with a proven resistance to the effects of chemical corrosion and UV light degradation, they are also fire retardant.



### GRP Stairs

We produce bespoke GRP stairs, fabricated using moulded grating, pultruded GRP sections and handrail. The anti-slip surface of the grating provides grip under foot whilst the grating allows water to drain away from the steps.



## Fall protection for ladderway openings & platforms

Safety Gates offer solutions to a range of applications, from a robust and reliable fall protection for ladderway openings and platforms to simple entry/exit points in ground level segregated pedestrian routes

### Simple, functional design features:

- All gates are easily configurable to left or right one-way opening
- Self-closing mechanism with adjustable closing force
- Maintenance free, self-lubricating hinge element
- Maximum opening angle of 180 degrees for easier access
- High visibility safety yellow colour (RAL 1023)
- Non-corroding - including A2 304 stainless steel components
- Very strong construction
- Long design life with 5 year (100,000 cycle) warranty
- UV resistant, anti-static and fire retardant
- Simple to install
- Pre-formed slots (Double Bar gate only) allow for fixture of a hazard warning sign
- TÜV Certificate


### The range:

- Available as either Double Bar or Single Bar types
- Choice of two standard lengths (940mm & 1200mm)
- May be cut to length on site to suit exact requirements
- Product is shipped boxed and pre-assembled complete with fasteners and installation instructions
- Adaptors available for mounting on round tube
- Double Bar gates are manufactured in accordance with EN 14122-3 & EN 14122-4

### Typical installation scenarios:

- Cage ladders
- Fire escapes
- Working platforms
- Silos
- Access to machinery
- Integration into existing guardrail systems
- Segregated pedestrian routing






### Single Bar Safety Gate

Our single bar safety gates provide protection of ladderway and platform openings, segregated entry routes and exit points.

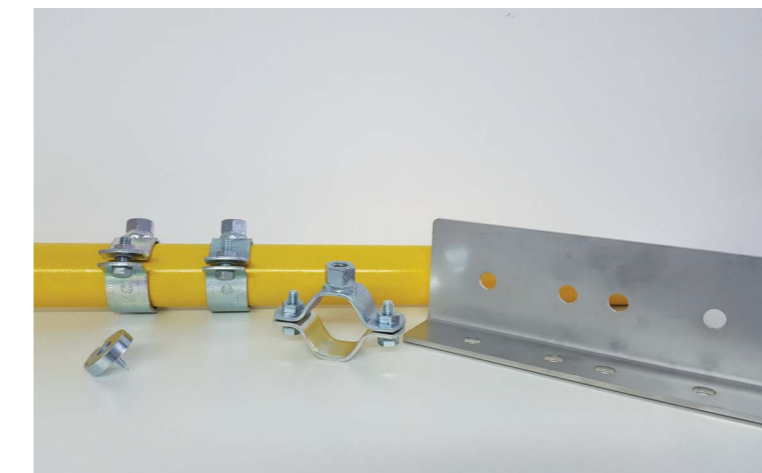
Standard opening widths: 94 cm | 120 cm  
The gate can easily be cut at site to the exact required length.



### Double Bar Safety Gate

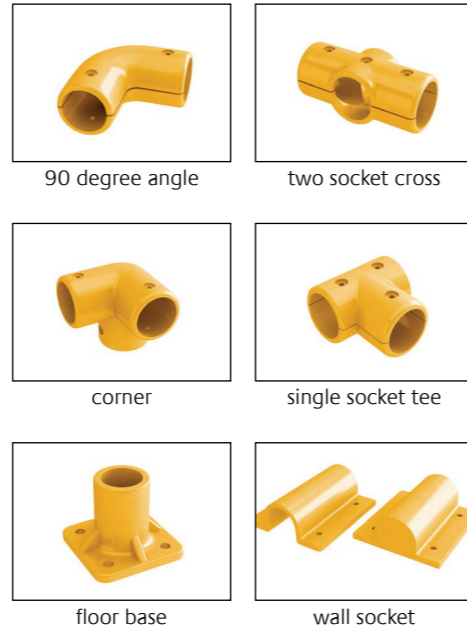
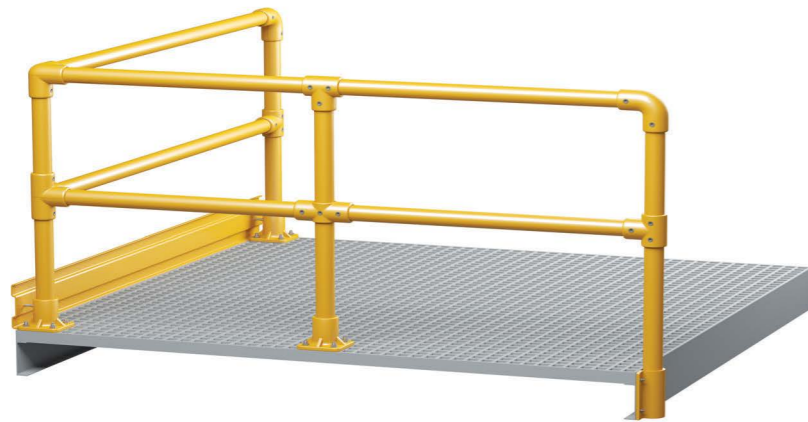
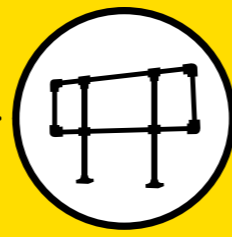
Our double bar safety gates provide fall protection for ladderway and platform edge opening. To be used on all levels above ground.

Standard opening widths: 94 cm | 120 cm  
The gate can easily be cut at site to the exact required length.



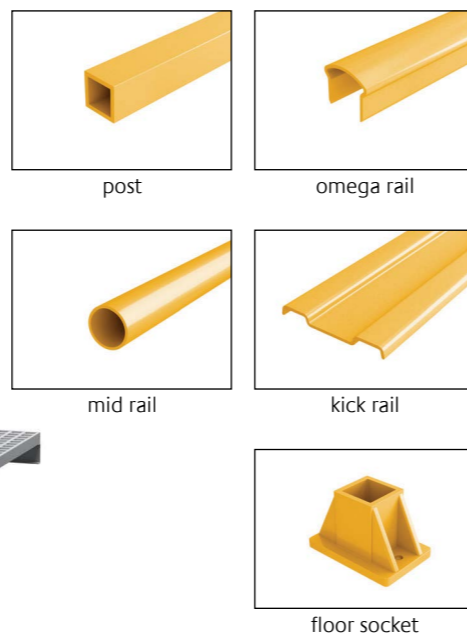
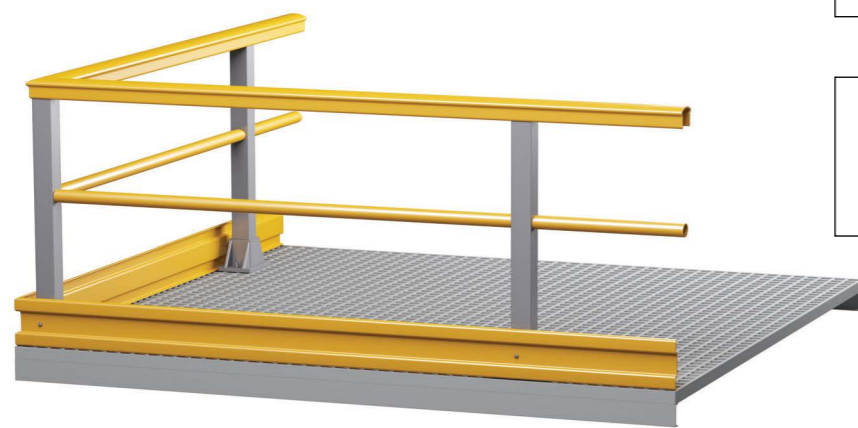
### Gate Accessories

We offer a full range of fixtures and fittings to complement our safety gate range.



**Round Handrail**

Applications for GRP round section include access platform walkways, pedestrian bridges, steps & walkways, worker access to machinery, manufacturing plants, marine vessel applications, water treatment works, offshore wind & oil facilities, railway trackside applications.



**Profiled Top Square Handrail**

Applications for GRP square section include access platform walkways, pedestrian bridges, steps & walkways, worker access to machinery, manufacturing plants, marine vessel applications, water treatment works, offshore wind & oil facilities, railway trackside applications.

**A versatile range of GRP pultruded structural sections to standard EN13706 E17 or E23, offering a wealth of construction opportunities.**

Typical profiles include angle, box, c-section, flat, i-beam, wide flange beam, round tube, plank, hand rail, ladder rung.



**GRP Ladders**

Fixed access ladders provide for worker safety in all types of workplace. The relatively light weight of the product makes transport, handling & installation far easier than metallic products. Suitable for industrial and commercial environments, our GRP fixed access ladder systems are designed to comply with the relevant standards and provide a safe, maintenance free and cost effective alternative to metal or wooden structures.



**GRP Access Structures**

Suitable for all industrial and commercial environments, our GRP structures are maintenance free and suitable for a broad range of applications. They provide huge efficiencies over traditionally used materials, they are light in weight in comparison, long lasting and quicker and easier to install. We offer a complete fabrication, delivery and installation service for a range of access structures, underpinned by engineering drawings & data when required.



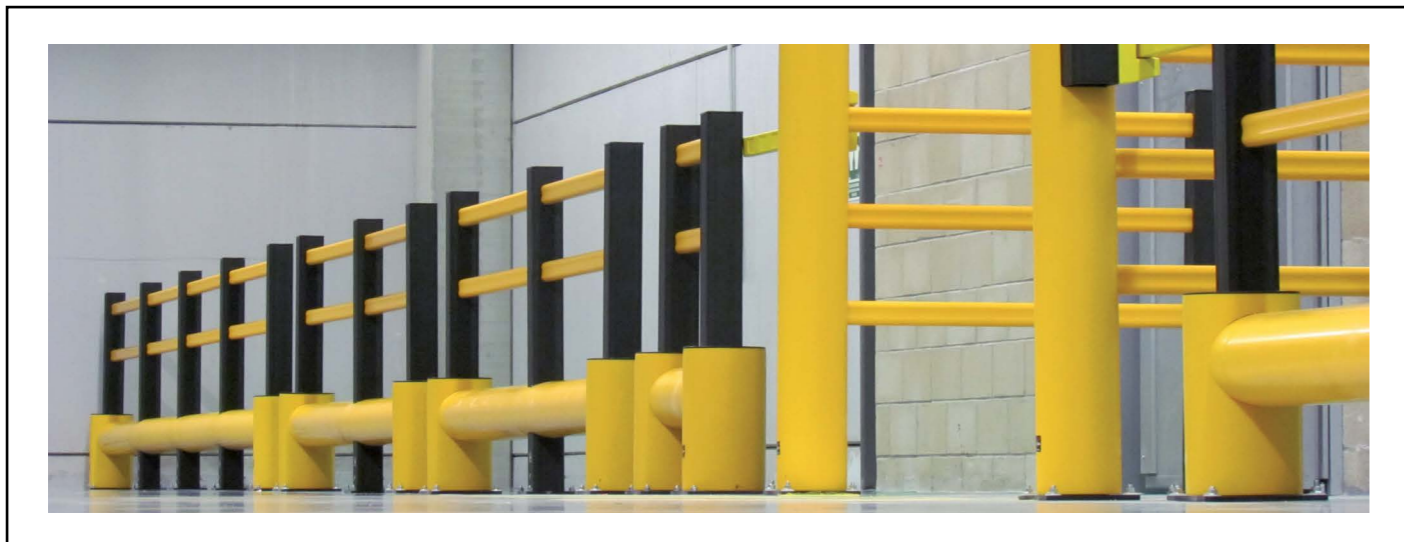
**The Flex Impact range is an extremely tough, multi-product flexible barrier system offering all-round protection of people and assets.**


**A wide variety of applications are possible, from the segregation of pedestrians and vehicular traffic to the protection of storage or machinery assets from accidental impact damage.**

Component parts are manufactured from a highly durable synthetic polymer derivative. The material has great resilience, yet is elastic in nature and absorbs the energy from impacts, before returning to its original form. These properties make it an ideal, low maintenance choice; offering significant cost savings over metal or wooden barriers. Flex-Impact will not rust or rot, nor will it ever need painting as the colour is throughout the product and it's easy to clean. Should any significant damage ever occur to any components, a modular construction allows for quick, easy & low cost repairs. The system is designed to be highly visible and is impervious to most environmental conditions making it suitable for both internal and external use, in and around the workplace. The Flex Impact range of products have been developed to comply with relevant safety standards and regulations. A unique (patented) Boplan locking system device is utilised in Handrail and Handrail Plus products. This means there are no nuts, bolts, screws, brackets or welding used in assembly, keeping the finished barrier free from sharp edges & projections, thereby minimising the risk of contact injury for users.

**Typical installation scenarios include:**


- Demarcation of pedestrian walkways
- Protection of door entrances/exits from vehicular damage
- Protection of racking systems from lift trucks
- Restriction of access to areas with sensitive machinery





**Handrail**

Handrail HP Plus is a 3 rail system offering a higher level of protection against all types of impact. Utilising a larger post section than the basic Handrail products, it provides a low cost system for use where a physical barrier is required for pedestrian segregation, access prevention or for fall & edge hazard protection. With a height complying with EU standards the system can be used in a wide variety of locations.



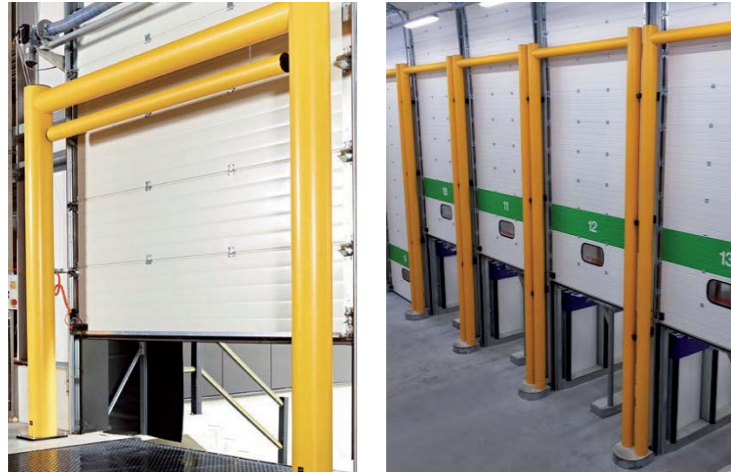
**Traffic Barrier**

The Traffic Barrier range is designed to protect machinery, materials, equipment and building structures where lift trucks and other vehicular traffic is present. Barriers are the ideal solution for defining vehicle traffic routes, in both internal and external environments. The modular components make any length of barrier possible and extensions to existing barriers are also simple to achieve. Each part is pre-assembled prior to delivery and the design guarantees an easy and cost effective fitting process. Selected high performance safety anchors are included with the system and installation should be into good quality concrete.



**Bollards**

The Bollard range has been designed to protect doors, gates and entranceways from the increasing impact forces of a collision and also to prevent or restrict damage to any vehicle involved. Bollards are supplied pre-assembled and is simply installed by anchoring the base plate to good quality concrete using selected safety anchor bolts (provided).



### Goal Post

The Goal Post product is a height and width restrictor designed to prevent access through doors, gates, entranceways and passages to oversized vehicles. Protection of overhead gantries, services and other vulnerable structures may be achieved with this product. Made from a synthetic polymer, the Goal Post is highly resilient and able to absorb the impact of a collision and prevent or restrict damage to any vehicle involved, whilst protecting any valuable infrastructure.



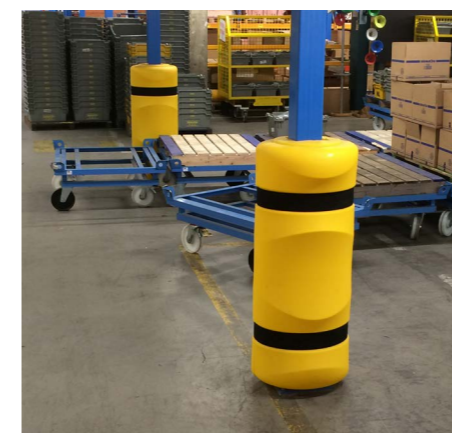
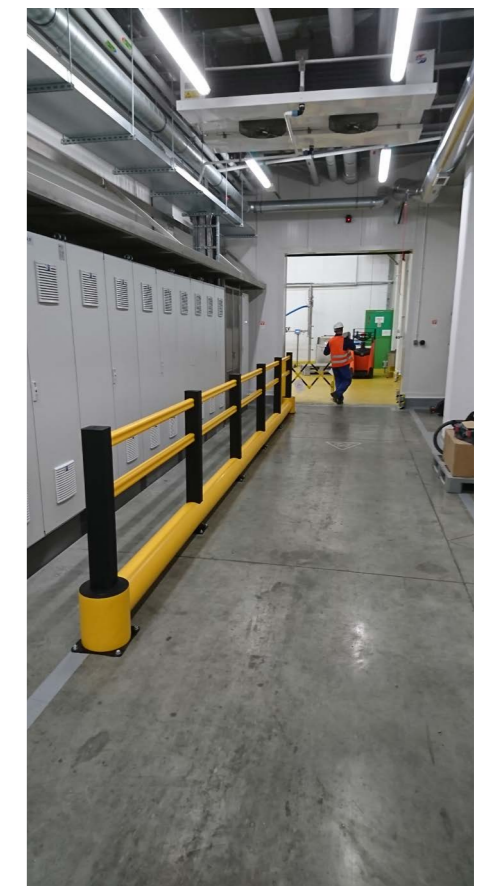
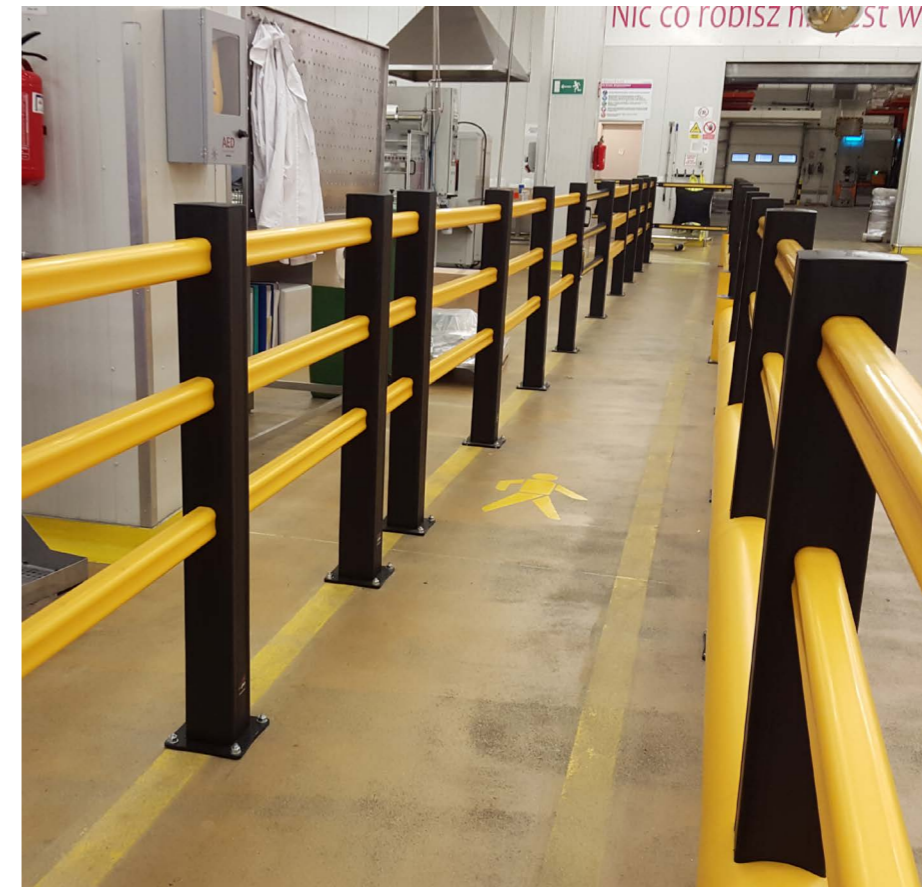
### Rack End Protector

The Rack End Protector is designed to provide effective impact protection for the ends of racking systems used in the warehouse, distribution and logistic industries. Suitable for almost all standard racking systems, unlike barriers made from steel or other materials, it is made from a highly durable synthetic polymer, with inherent flexibility under impact conditions while also having the strength to withstand high impact loadings. This means that, rather than being permanently deformed or destroyed, the barrier absorbs and dissipates the force of impact by 'flexing' and bending before returning to its original shape and form.



### Column Protection

The Column Protection range is designed to encase steel and concrete structural column elements at ground level in buildings where lift trucks and other vehicular traffic may present a hazard. It provides maximum protection from higher energy impacts, preventing costly damage to both buildings & vehicles and mitigating associated business disruption.

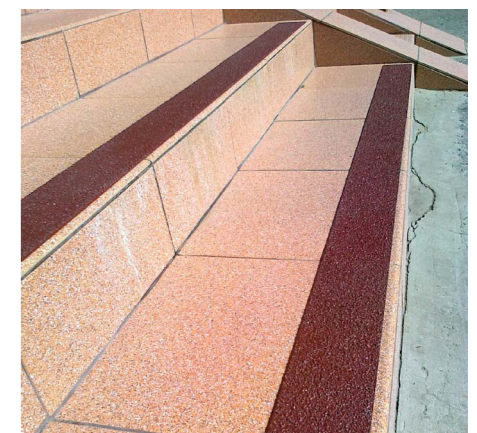
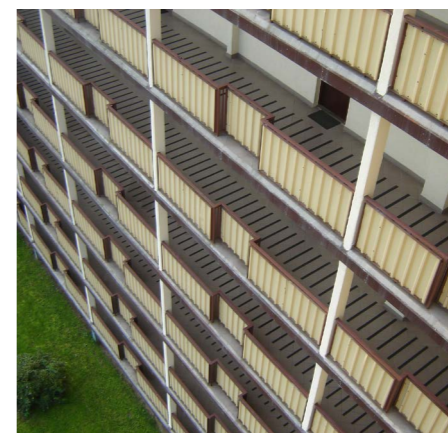
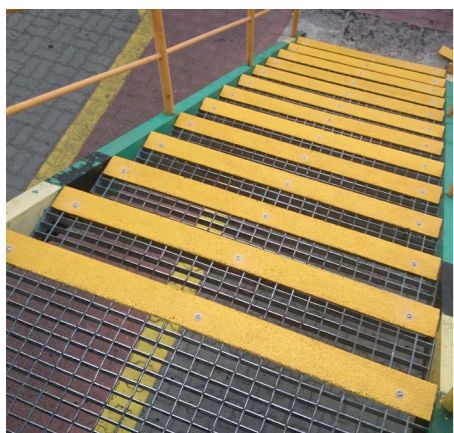
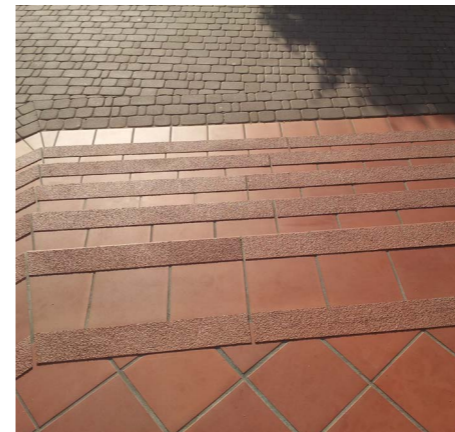
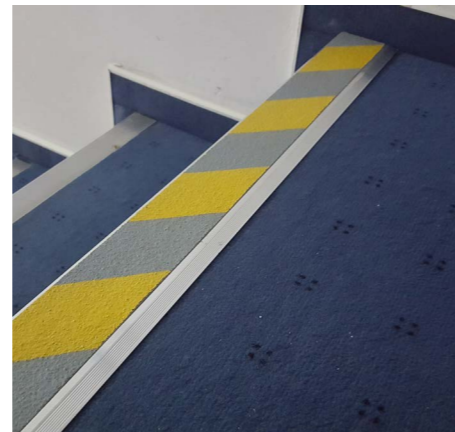
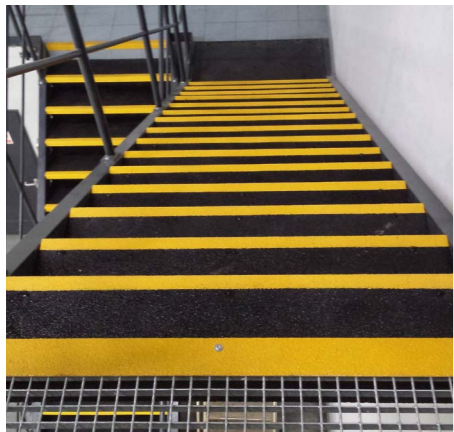
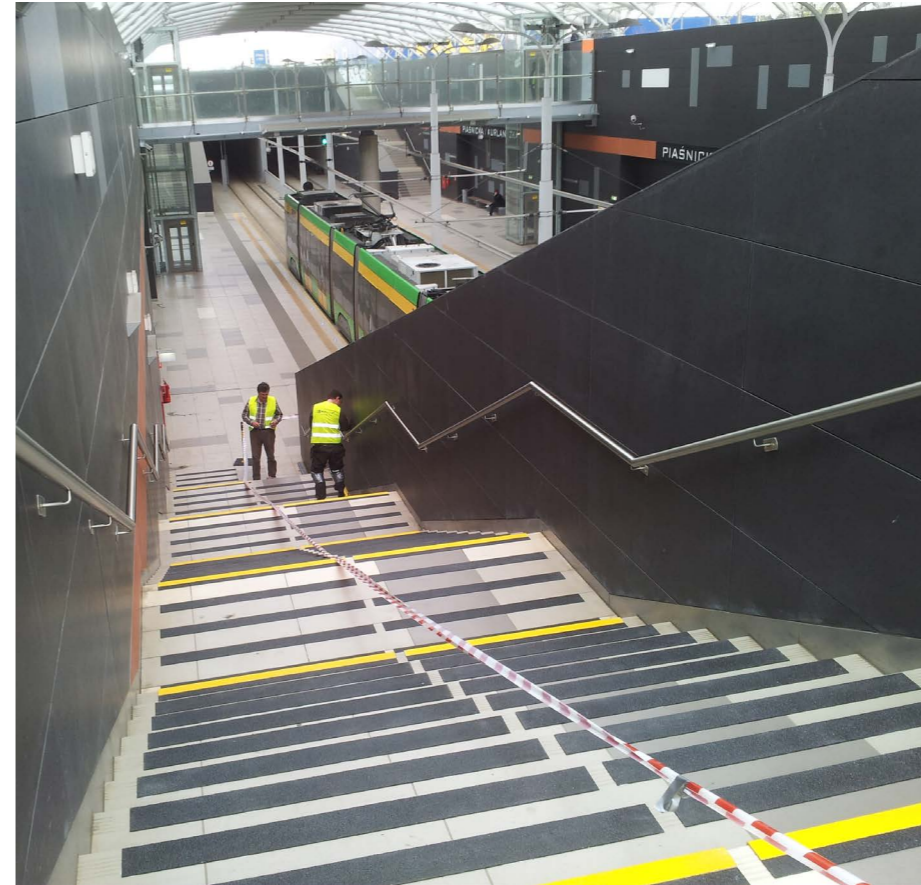




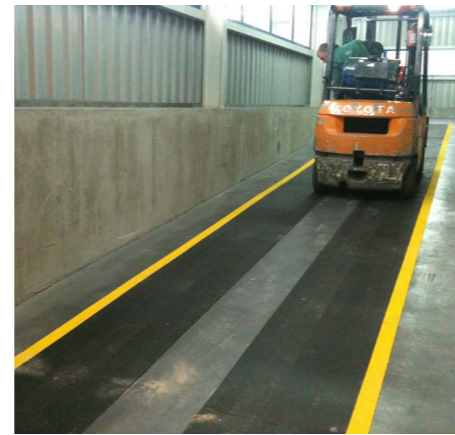
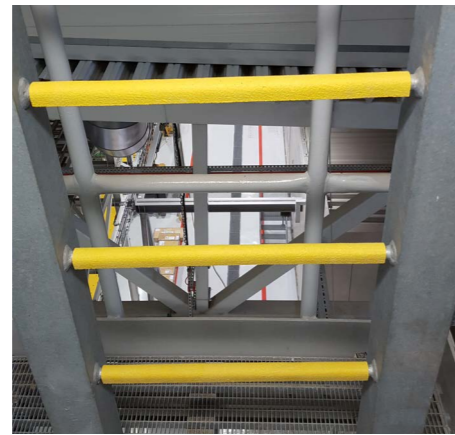
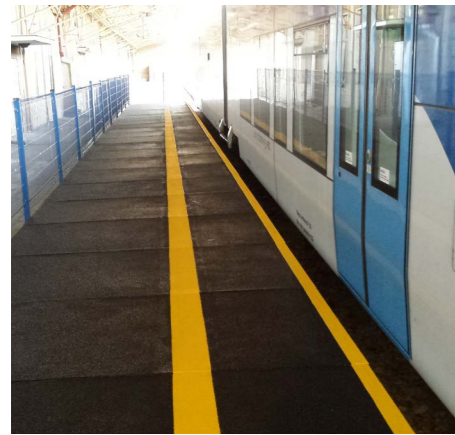
# Application



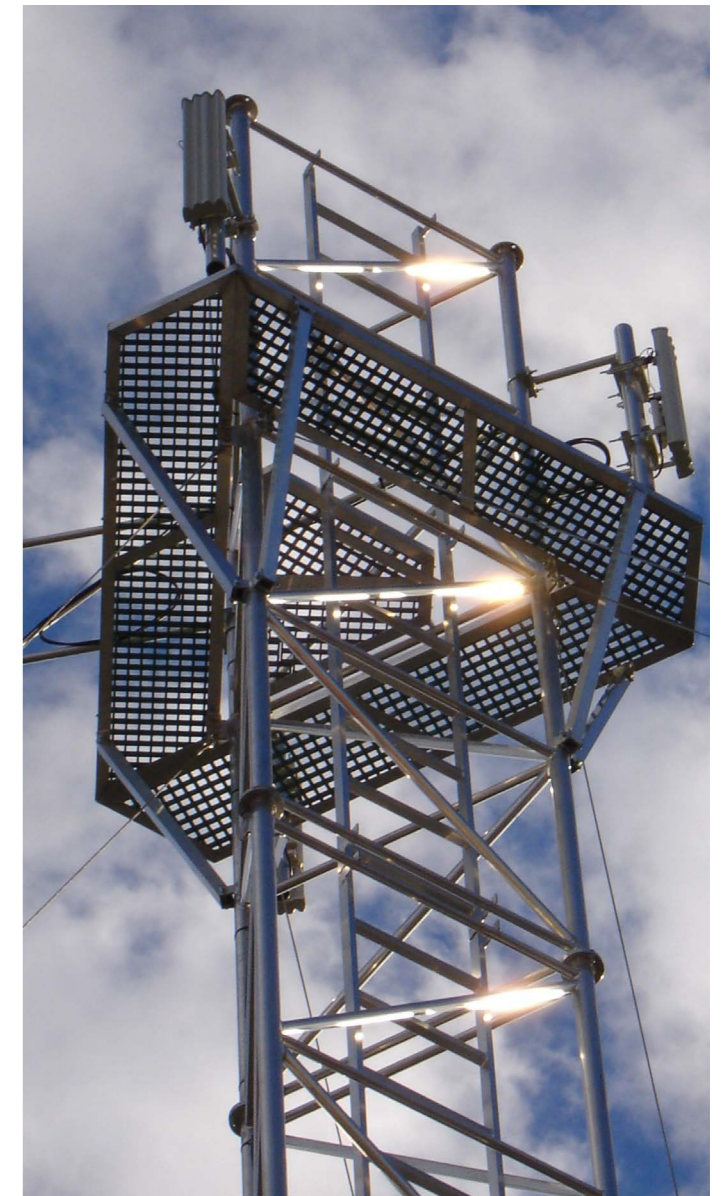
# Application



# Application



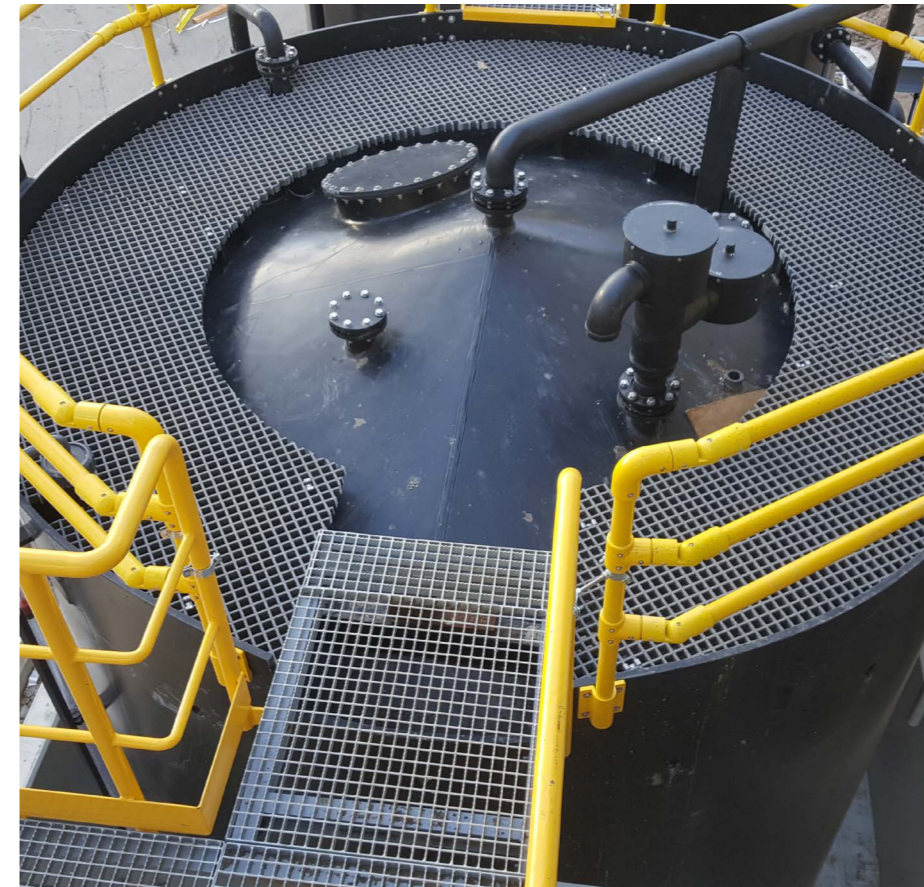
# Application

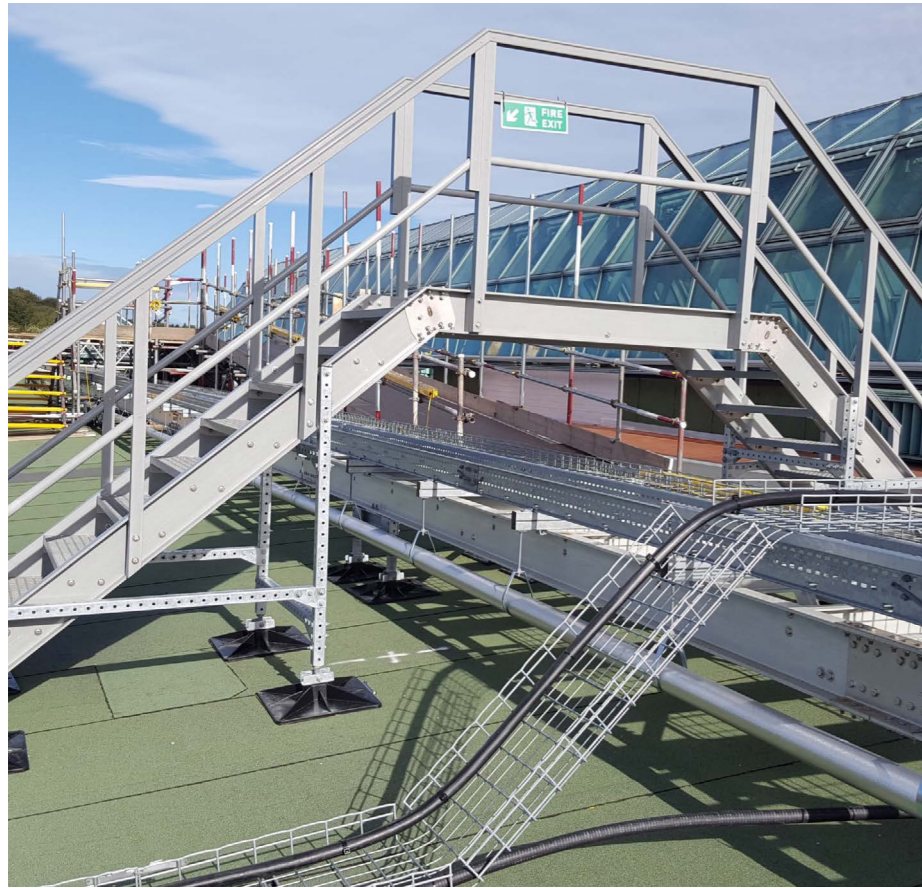


# Application



# Application





**With over 10 years experience in the field, we have a wealth of knowledge and we are able to offer a well rounded service to suit the requirements of customers from a wide variety of market sectors. Please explore our services below...**

### Site Surveys

We are always happy to attend site and provide help, advice, surveys & no-obligation quotations. Equally, for simpler problems we can often do this from photographs or video, with descriptions and measurements supplied to us by the client.

### Technical Advice

Over the years, our technical knowledge and experience have grown and enabled us to successfully undertake more demanding and complex contracts. We have a library of data behind our products that can be utilised in specification and design for our customers or their consultants. We also have strong links to technical resources with our manufacturing partners. We are at your disposal.

### Design Drawings And 3D Rendering

We can offer a professional service in the realisation of client concepts by means of drawings and 3D rendered CAD modelling.

### Engineering Design

We are always happy to attend site and provide help, advice, surveys & no-obligation quotations. Equally, for simpler problems we can often do this from photographs or video, with descriptions and measurements supplied to us by the client.

### In-House Fabrication & Assembly

With investment in larger facilities, now spread across two business units, a capacity to offer bespoke made products and a service which sets us aside from simple distribution, we welcome enquiries from companies looking for a reliable partner for their projects.

### Cutting & Waterjet Cutting

We employ three large industrial saws at our premises used for the regular cutting of materials using diamond and carbide technologies. We are also able to offer a waterjet cutting service at competitive rates for extreme precision requirements.



**Evergrip spółka z o.o.**

ul. Matuszewska 14,  
03-876 Warszawa  
NIP: 1132737442  
tel: +48 22 424 78 59  
Skype: evergrip.pl  
e-mail: [biuro@evergrip.pl](mailto:biuro@evergrip.pl)

**Sales departament:**

tel: +48 22 465 26 01  
tel: +48 531 040 330  
tel: +48 792 334 456

**[www.evergrip.pl](http://www.evergrip.pl)**